



# Exhibition Proposal Guide

---

## Contents

About Our Galleries	2
Exhibition Philosophy	3
First Level Layout	4
Second Level Layout	5
Gallery Images	6 - 10
Exhibition Proposal and/or Portfolio Submission Guide	11

**Prepared by:**

**Stephanie Hazzard, Anton Art Center Exhibition Manager**



## About Our Galleries

Thank you for your interest in exhibiting with the Anton Art Center!

We have three gallery spaces: the First Level Gallery (West, Center, East, and Long Wings), the adjoining History Gallery Wing, and the Second Level Gallery (Mezzanine). In 2019, the Center celebrates fifty years as Macomb County's leading non-profit art organization. The organization is housed in an original historic Carnegie Library building built in 1904, located in the county seat, Mount Clemens, in Southeast Michigan.

The Anton Art Center accepts exhibition proposals and portfolio submissions of all kinds year-round. All submissions are reviewed by the exhibition committee. Available exhibition space is limited and planned one to two years in advance. Scheduled exhibitions are usually on display for about four weeks or so. The First Level and History Wing exhibits typically run at the same time, though the exhibits are not required to be thematically paired.

An exhibit statement is featured with every show, usually no longer than one page in length. Some of the groups that have collaborated with us include: the Detroit Society of Women Painters and Sculptors, the Eleanor & Edsel Ford House, Birmingham Society of Women Painters, Pewabic Pottery, Great Lakes Lace Group, Macomb Community College, Oakland University Faculty, Packard Proving Grounds, Interfaith for Racial Justice, Selfridge Air Museum, CARE of Southeast Michigan, Michigan Silversmith Guild, Colored Pencil Society of America: Detroit Chapter, Detroit Historical Society, Romeo Guild of Art, Palette & Brush Club, Sisters of the Brush, Tuesday Printmakers, and Meadow Brook Hall.

Admission is free and open to the public; donations are accepted. Parking is available by street or meter lot; free after 6pm and on weekends. Our building is handicap accessible with designated handicap parking and an operating elevator. The building is open Tuesday through Saturday from 10am-5pm.

Thank you for your consideration. Should you be interested in scheduling use of the space or submitting your portfolio, please complete and submit the Proposal Form (page 11) when convenient for review.

Sincerely,

Stephanie Hazzard

Anton Art Center Exhibition Manager

[sahazzard@theartcenter.org](mailto:sahazzard@theartcenter.org)



## Exhibition Philosophy

Exhibitions are our strength and the core of our mission. The Anton Art Center hosts open call exhibitions each year, including the prestigious Michigan Annual, a juried, all-media competition held for Michigan artists. Local art associations such as the Lakeside Palette Club of St. Clair Shores (LPC), the Mount Clemens Art Association (MCAA), the Romeo Guild of Art (RGA), and the Warren Tri-County Fine Arts Association, Inc. (WTCFA), exhibit at the center as well.

Our mission is to enrich and inspire people of all ages through the arts. The Anton Art Center serves over 16,000 visitors each year through about 15 various art exhibits and over 40 classes. We have over 400 members, around 90 active volunteers, and a hard-working staff of six. Our primary activities are exhibitions, education, and artist-support programs and events.

Exhibitions are held in three galleries: the Main Galleries, the adjoining Boll History Gallery (1<sup>st</sup> Floor), and the Petitpren Community Gallery (2<sup>nd</sup> Floor), each with a different focus. We also exhibit art outside the building, adjacent to the center, in the Richard & Jane Manoogian Art Park.

All exhibits are managed by Exhibition Manager, Stephanie Hazzard.

**ANTON ART CENTER 125 Macomb Place, Mount Clemens, MI 48043 USA**  
Tel. (586) 469-8666 | Fax (586) 469-4529 | [information@theartcenter.org](mailto:information@theartcenter.org) | [www.theartcenter.org](http://www.theartcenter.org)



GALLERY HOURS: Tuesday-Saturday 10:00AM-5:00PM | Closed Sunday & Monday  
ADMISSION: Free and open to the public. Donations are accepted and appreciated!  
PARKING: Metered street and lot parking; 50 cents/hour. Free after 6pm and weekends  
ACCESSIBILITY: Our building is handicap accessible with designated handicap parking and an operating elevator.

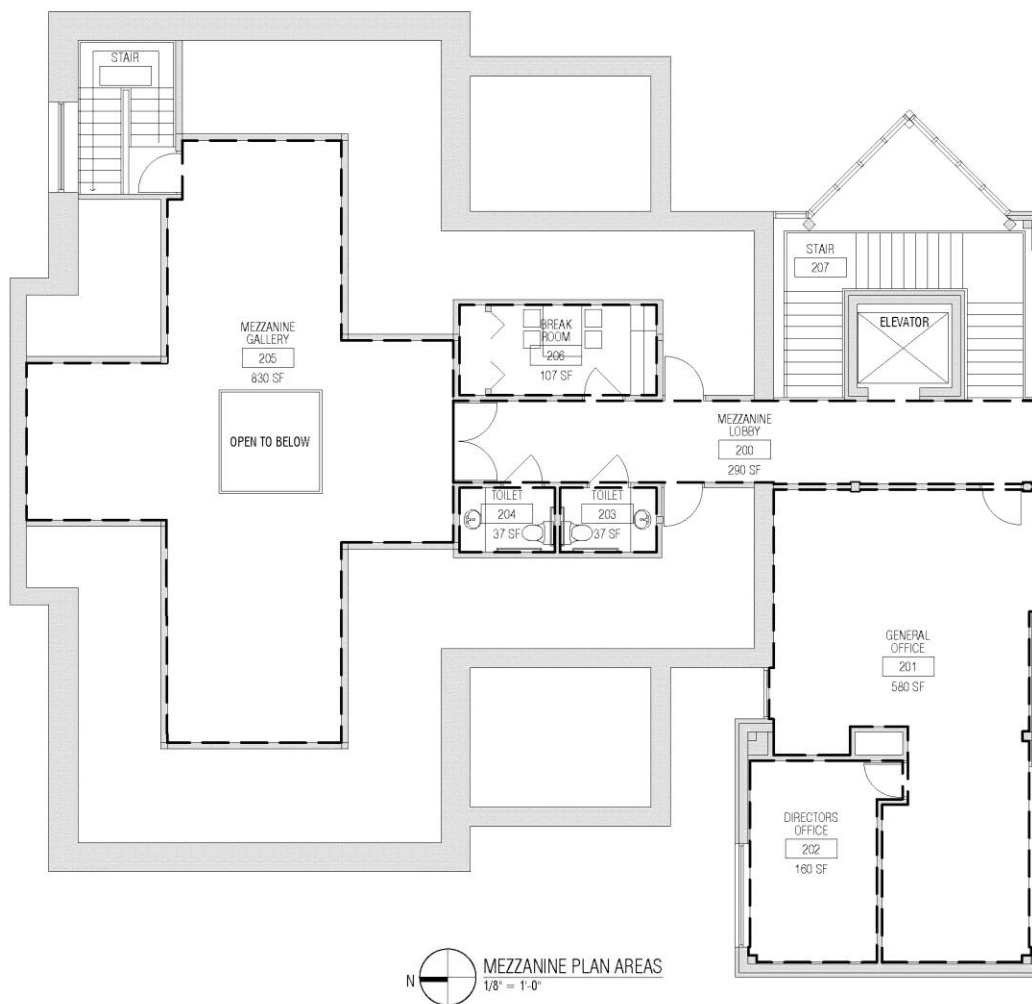




## Second Level Layout

### *Second Level Gallery Space - Mezzanine (#205)*

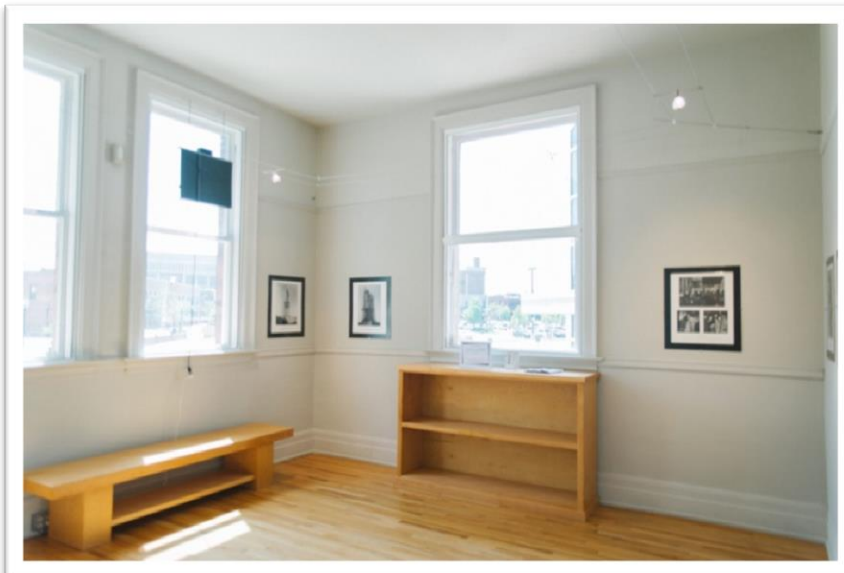
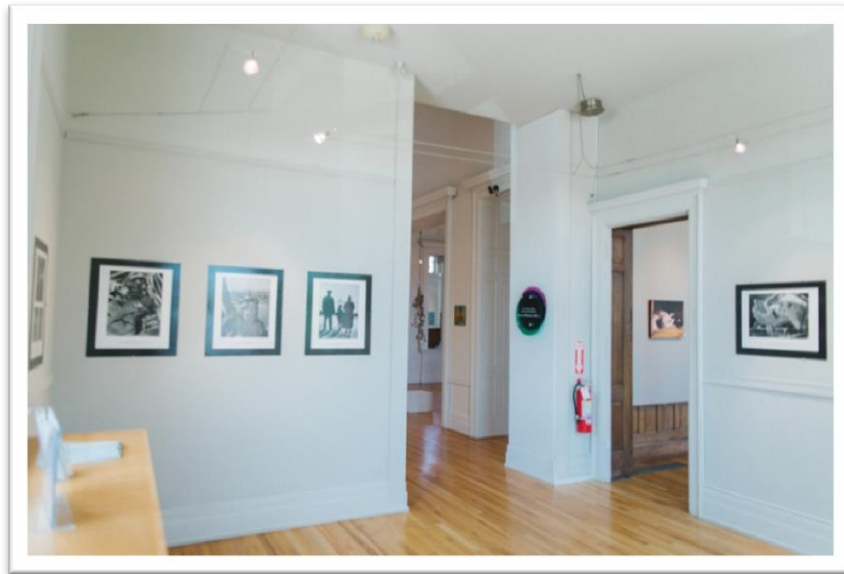
**Notes: 830 square feet | Ceiling Height varies by wing (7 or 8 feet)**





## Boll History Gallery Wing

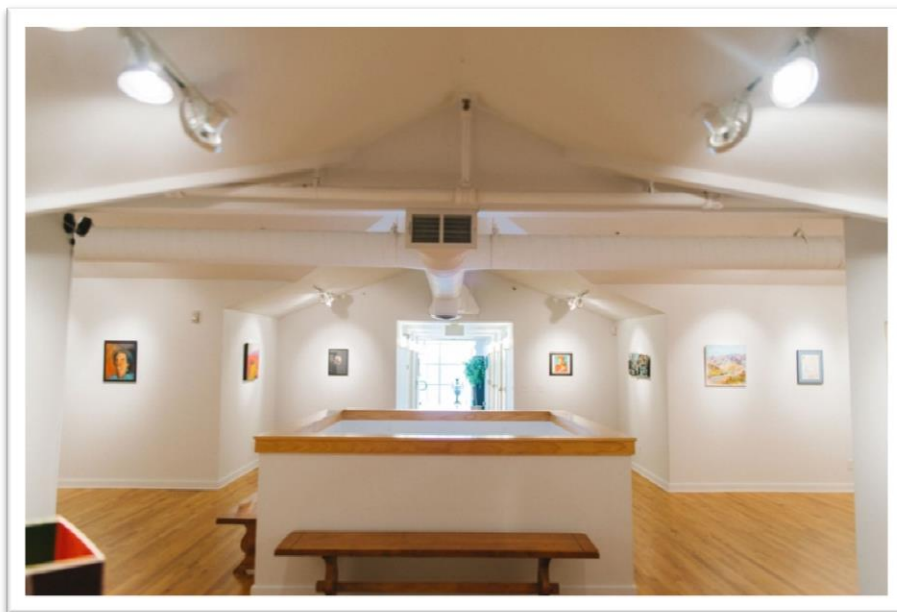
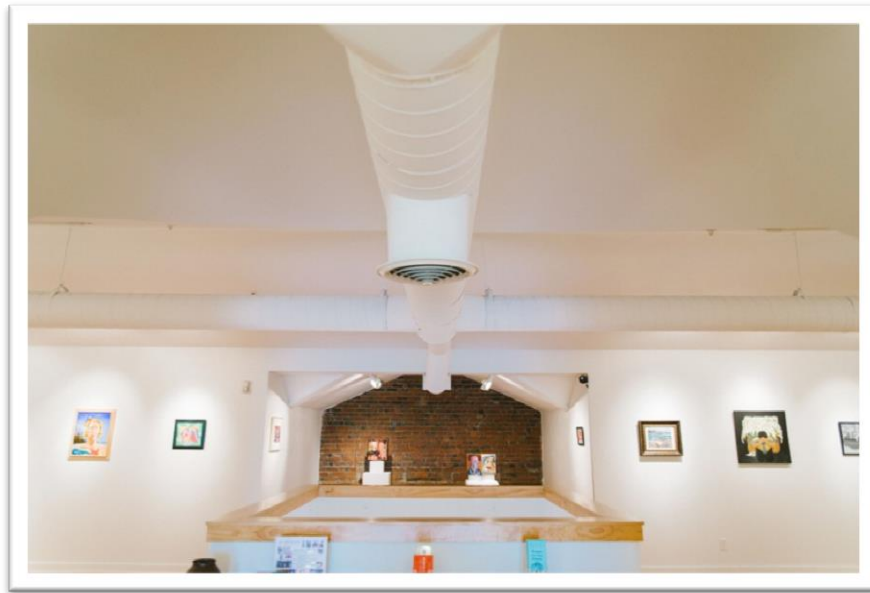
### *First Level*





## Second Level Gallery Space

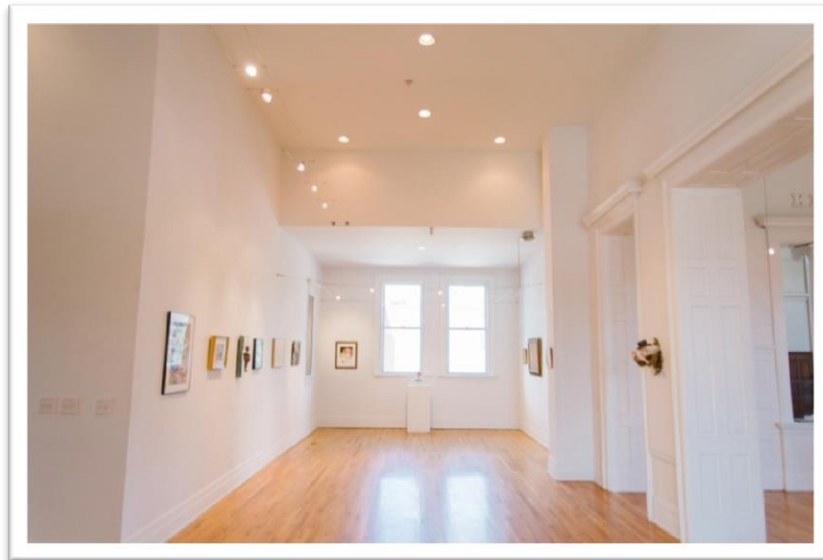
### *Mezzanine*





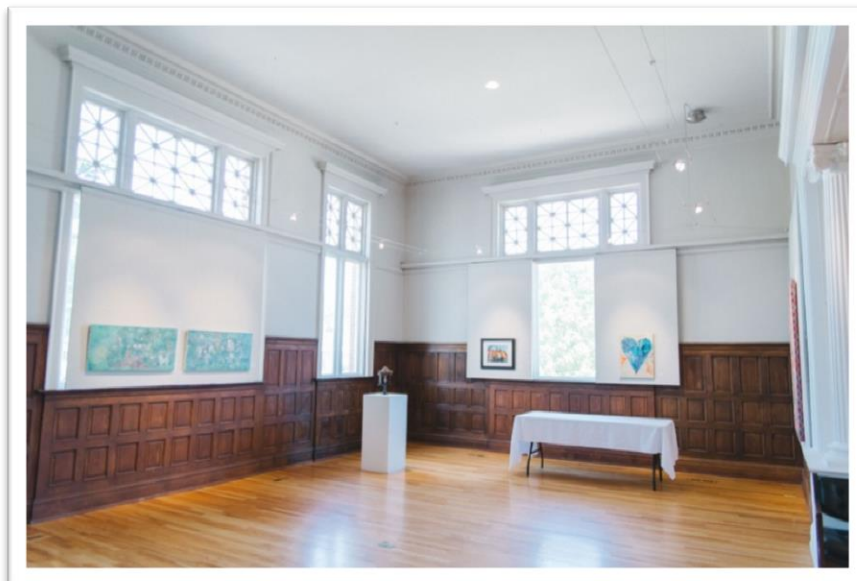
## First Level Gallery Space

### *Long Wing*



## First Level Gallery Space

### *West Wing*

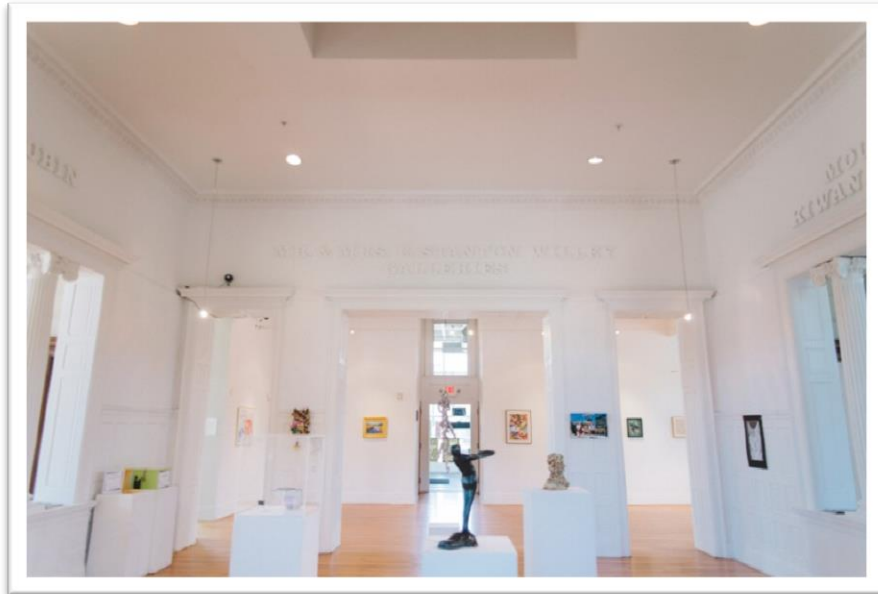






## First Level Gallery Space

### *Center Wing*



## First Level Gallery Space

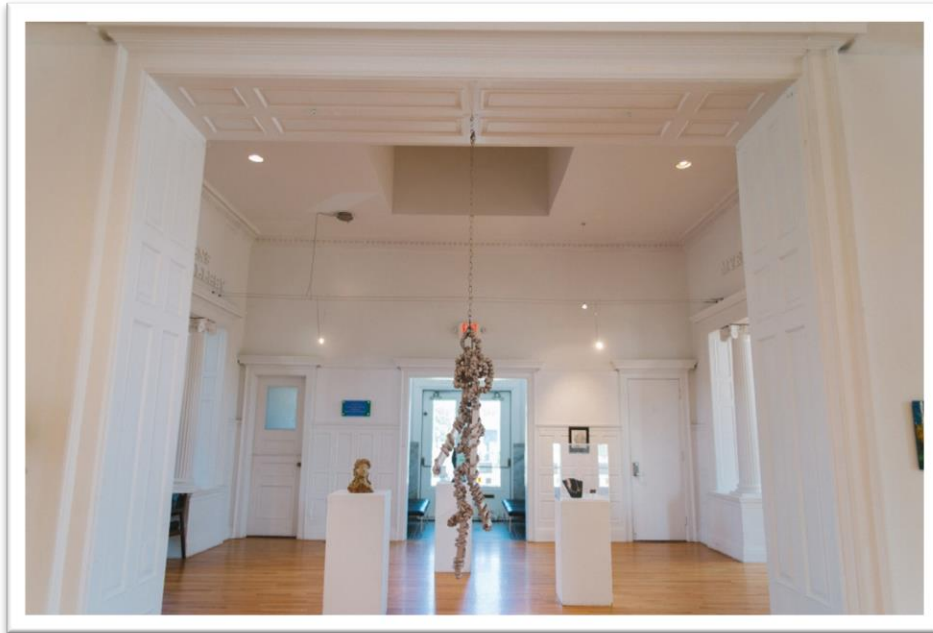
### *East Wing*





## First Level Gallery Space

### *Center Wing*





## Exhibition Proposal/Portfolio Submission Guide

Group or Individual Name: \_\_\_\_\_

Contact Name: \_\_\_\_\_

Phone: \_\_\_\_\_ Fax: \_\_\_\_\_

Email: \_\_\_\_\_

Address: \_\_\_\_\_

Desired Exhibition Dates for Proposal: \_\_\_\_\_

☐ Or check here if any available dates are desired

Desired Gallery Space: (circle) First Level Gallery / History Gallery / Second Level Gallery / Unsure

Artwork Media: \_\_\_\_\_

Number of Artworks: \_\_\_\_\_

Exhibition Description/Details: (☐ Please check here and attach additional pages if needed)

Artist/Group Member Names: (☐ Please check here and attach additional pages if needed)

For group shows only: Will the exhibit be juried? (circle one) Yes / No

If Yes, Juror(s) Name: \_\_\_\_\_

### **Please attach additional pages if available: (check all that apply)**

- ☐ Artist Statement(s)   ☐ Artist Biography(s)   ☐ Artist Website(s)   ☐ Artist/Member List  
☐ Artwork Images   ☐ Group History and/or Description   ☐ Group Website  
☐ Additional Contact Person(s) Information   ☐ Exhibition Description   ☐ Other Information

***Thank you for your interest! This form may be mailed, faxed, or emailed to the Anton Art Center for submission.***

**ANTON ART CENTER 125 Macomb Place, Mount Clemens, MI 48043 USA**

**Tel. (586) 469-8666 | Fax (586) 469-4529 | [information@theartcenter.org](mailto:information@theartcenter.org) | [www.theartcenter.org](http://www.theartcenter.org)**

**CONTACT: Stephanie Hazzard, Exhibition Manager, [sahazzard@theartcenter.org](mailto:sahazzard@theartcenter.org)**



**GALLERY HOURS: Tuesday-Saturday 10:00AM-5:00PM | Closed Sunday & Monday**

**ADMISSION: Free and open to the public. Donations are accepted and appreciated!**

**PARKING: Metered street and lot parking; 50 cents/hour. Free after 6pm and weekends**

**ACCESSIBILITY: Our building is handicap accessible with designated handicap parking and an operating elevator.**